

Club Meetings

The February club meeting will be hybrid in-person plus Zoom; the Photo Review Session will be online only.

Saturday, February 11

Photo Bull Session

Loveland Panera Bread
1550 Fall River Drive, Loveland
8:30–10:30 AM

Monday, February 13

Monthly Club Meeting

Chase Bank Building
200 E. 7th Street, Suite 200
Social time 6:00 PM
Meeting 6:30–8:30 PM

<https://zoom.us/j/93226580276>

Monday, February 20

Photo Review Session

6:30–8:30 PM

<https://zoom.us/j/95087721084>

Tuesday, February 28

LPS Board Meeting

Perkins Restaurant
2222 W. Eisenhower, Loveland
Meal 5:30 PM; meeting at 6:30
Open to All

Please mute your microphone during online meetings except when you are speaking, to avoid background noises.

Abstract Photography: The Techniques Behind the Best Images

Presented by Lisa Langell

Abstract photography is all about taking everyday objects and transforming them into something creative and mostly unrecognizable in comparison to their original form. In Lisa's webinar, you will learn:

- How to apply basic compositional guidelines while using your creativity and vision to create abstract images
- How to use intentional camera motion (ICM) and motion blur
- Patterning and its application to abstract photography
- How contrast, shadows, color theory, textures, edges, and more can help you design images that are artistic, ethereal, and fun
- How to present your abstract images for impactful, stunning wall art and more!

This session is always full of laughs, freedom, and creativity. It's a great class for any level of photographer with any camera—even a mobile phone!

A nature photographer and birder from the age of eight, Lisa is the founder of Langell Photography, Inc. (<http://www.langellphotography.com>) and, more recently, Focus Your Art, LLC (<http://www.focusyourart.com>). She started her business in 2010 after long vibrant careers as a floral designer, educational psychologist, and consultant and in helping launch and manage two startups that grew into leading companies in the ed-tech space. Since then, she has earned numerous awards and has been published in Outdoor Photographer, Arizona Highways, Ranger Rick, Images Arizona, and more. She is an ambassador for Tamron and Fotopro and is a judge for Viewbug.

Lisa loves creating nature photography and art that is inspired by her background in psychology and design. When Lisa isn't having fun making photographs, she's thriving on teaching photography—most often in Alaska! Her humility and passion for both shines through in how she provides memorable, fun, and educational experiences that enrich, invigorate, and expand photographers' minds in wonderful ways.

February Meeting



LPS Board of Directors

PRESIDENT

— ARDETH CARLSON

VICE PRESIDENT

— RICH KREBS

PAST PRESIDENT

— DAN KOZLOWSKI

TREASURER/MEMBERSHIP

— TIM HITCHCOCK

SECRETARY

— JERRE JOHNSON

PROGRAMS

— TIM KATHKA

— RICH KREBS

— RUTH SPRAIN

COMPETITION

— JEFF STEPHENSON

Chairpersons

FIELD TRIPS

— OPEN

FORUM DIRECTOR

— INGRID JACOBSON

GREETING HOST

— JERRE JOHNSON

MENTOR

— MIKE WILCOX

PUBLICITY

— OPEN

SCHOLARSHIPS

— RUTH SPRAIN

NEWSLETTER

— ARDETH CARLSON

WEBMASTER

— MIKE TESKA

PSA REPRESENTATIVE

— LISA SCHNELZER

InFocus

The e-Newsletter for the
Loveland Photographic Society

Mailing Address

P. O. Box 7604 • Loveland, CO 80537

Public Facebook Page

[https://www.facebook.com/
LovelandPhotographicSociety/](https://www.facebook.com/LovelandPhotographicSociety/)

Members Only Facebook Group

[https://www.facebook.com/
groups/237033251716/](https://www.facebook.com/groups/237033251716/)

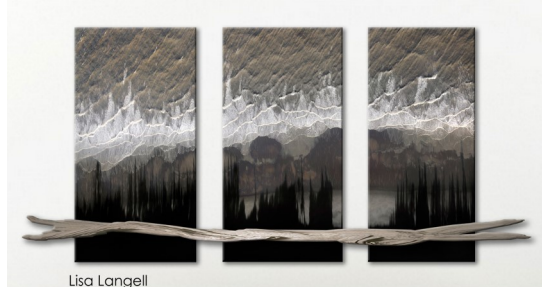
Submitting Pictures for the Monthly Competition or Photo Review Session

- Log on to the LPS website
- Mouse over the **Competitions** dropdown on the Home Page.
- Select menu item:
Submit images to a Competition
- Select the Competition category or the Third Monday Photo Review
- At the bottom of the screen, click on **Upload images into the Competition.**
- Then click on the button **Select** which will open a window on your computer to select an image.
- Click on **Save Images and Proceed to Edit Page.**
- Type in a title and click on **Save any changes and return to original page.**
- You can replace any photo, up to the submission deadline, if desired.

The monthly competitions allow a single image per category. The photo review session allows up to three images.



Photos © Lisa Langell



Find Lisa on social media:

Facebook: <https://www.facebook.com/lisalangell/>
and [https://www.facebook.com/
LisaLangellPhotography/](https://www.facebook.com/LisaLangellPhotography/)

Instagram:
<https://www.instagram.com/langellphoto/>

YouTube: [http://www.youtube.com/
Langellphotography](http://www.youtube.com/Langellphotography)

IMPORTANT: Registration for the February Presentation

Lisa Langell will be presenting to our meeting via her webinar. **If you are attending online**, you will need to register in advance for the webinar. The link for the webinar and a password will be emailed to you, which you will use to view the webinar after the competition slideshow is finished. This is absolutely free, but you will not be able to watch the webinar unless you have registered before the beginning of the meeting.

For those watching the meeting online, here is the process:

- 1) Log *in* to our club meeting via the usual link on page 1 of this newsletter, also in the meeting reminder email, for the opening of the meeting and to watch the competition slideshow.
- 2) The president will let you know when you need to log *out* of the LPS meeting.
- 3) Log *in* to the webinar via the link and password you have been sent by Lisa Langell. The webinar will begin at 7:00 p.m.

Use the following link to register for the webinar:

[https://us06web.zoom.us/webinar/register/
WN_uxBpVJN9RbqW4cDx5s1w6A](https://us06web.zoom.us/webinar/register/WN_uxBpVJN9RbqW4cDx5s1w6A)

If you think you might not be able to attend the meeting in person and want to be sure to see the presentation, go ahead and register. Lisa's recording of the webinar will be available for 30 days after the meeting, but we will not have our own recording on our website, so members who want to be able to watch the recording later will need to register for the webinar, even if you watch it at the meeting; *those viewing the webinar only at the meeting who have not registered will not be able to watch the recording after the meeting.*

This is a one-time process specific to the presentation by Lisa Langell, and not a regular procedure for future club meetings.

Competition Corner

February Competition

Open Projected (included every month)
Travel

Topic: Pets

Submission Deadline

Before Midnight, Monday, February 6

Please keep the judging criteria in mind:

Impact and Viewer Interest—"Wow" factor is the nebulous quality where an image "pops." This subjective aspect of judging should not preempt the technical or composition aspects of an image.

Composition—Good composition is a pleasing arrangement of the elements in an image. There are many guidelines for good composition that judges may consider.

Technical Quality—This includes sharpness, focus, color, tonal scale, contrast, appropriate depth of field and other qualities. Consideration is also given for the effect the photographer was trying to achieve such as high key, multiple exposure, or selective focus.

Monthly Topics—The subject matter should be related in some manner to the topic. While there are no formal deductions or penalties, judges may reduce their overall score if they feel the image does not align with the monthly topic. With that said, creative interpretation is encouraged.

Open Projected—The image must begin as a photograph. From there, it is up to you. Any photograph may be entered in the Open Projected category.

February Competition Groups

Participation in a group is determined by the average of the member's 9 previous LPS competition scores. The groups for the February competition:

Level 5—Max Coopwood, Darryl Hodson, Ed Ogle, J.R. Schnelzer, Lisa Schnelzer, Ruth Sprain, Jeff Stephenson, Mike Wilcox

Level 4—Gerald Baumann, Kevin Burkhart, Tim Hitchcock, Dan O'Donnell, Laurie Paulik, Michael Rothschild, Bob Smith, Mike Teska, Dave Van Riper

Level 3—Jenny Anderson, Ardeth Carlson, Kurt Flock, Marvin Froistad, Robert Huffsmith, Jerre Johnson, Tim Kathka, Dan Kozlowski, Rich Krebs, Bob McDonnell, Octavio Noda, Josemaria Quera

Level 2—Wayne Snodderly

All other members will compete in group 1 until the member has 9 submitted images that reach an averaged score for a different group. An individual member's competition group might vary from month to month.

New Members

A warm welcome to these new members:
David Bodine
Paul Markham

Travel Competition Images

Because LPS follows PSA travel competition guidelines for our travel category, it is important to be aware of these explanations for allowable travel competition images when selecting your images for submission. These guidelines have been updated for 2023:

1. If the image is predominantly or exclusively a land-, sea- or cityscape, these "scapes" must include characteristic, distinctive, and recognizable physical features, although it is not necessary that the image identify the exact location.
2. Images that predominantly or exclusively depict people and their activities must illustrate a distinctive culture of a country, region, or continent.
3. Images that predominantly or exclusively depict animal populations are allowed if the animals are in their native environment and are characteristic of that country, region, or continent.
4. Portraits or other close-ups of people or objects, in addition to meeting the above paragraphs as applicable, must include elements depicting some of the surrounding environment to make it obvious that the image was not taken in a studio setting.
5. Images from events or activities arranged for photography or of subjects directed or hired for photography are NOT allowed.
6. Time exposures are allowed if they do not dominate the image as a special effect. (Star trails, for example, are a dominating effect.)
7. Highly distorted images such as those produced by fisheye lenses are NOT allowed.

These guidelines and allowable edit techniques for Photo Travel are also included on our website: **Competitions>PSA Inter-Club Image Competitions.**

PSA Interclub Competition Round 1 Print Results

Delayed results of Round 1 of PSA's interclub competition in the Pictorial Print category are in, and LPS showed very well. Here are our club member award winners:

Large Color

2nd Place—Laurie Paulik, "Red-Eyed Tree Frog"

Large Monochrome

1st Place—J.R. Schnelzer, "White Angel"

Small Monochrome

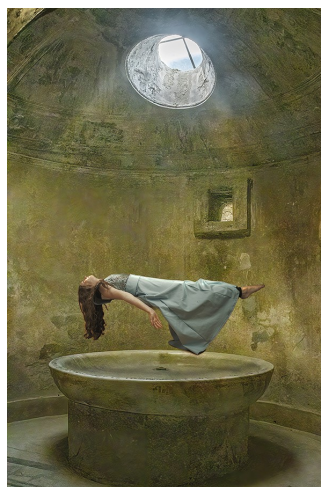
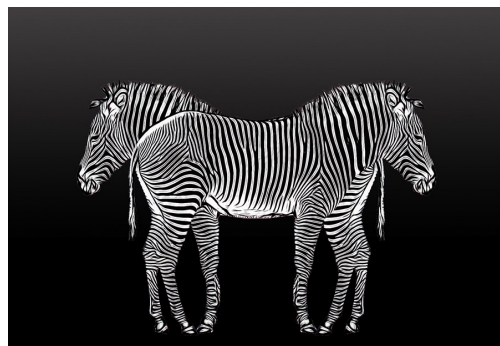
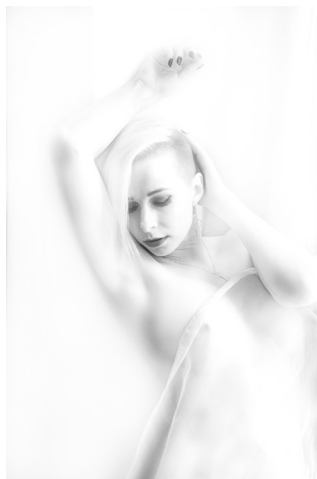
1st Place—Lisa Schnelzer, "Gorilla Hug"

Honorable Mention—Mike Wilcox,
"Binary Binaries"

Creative Altered Reality

3rd Place—J.R. Schnelzer,
"The Lightness of Being"

The LPS reps for the PSA interclub competitions are selecting member photos for Round 2 of the Nature, Pictorial Print, and Travel divisions, with a deadline of February 15. See page 5 for more information.



National Wildlife Federation Contest Announcements

Check out the winning entries in [the winners of the 51st annual National Wildlife® Photo Contest](#). After reviewing more than 30,000 entries, the judges selected a grand prize, called the Nature's Witness Award, and winners in each of nine categories.

Enter the 2023 contest here:

https://photocontest.nwf.org/menu-home.aspx?comp_id=F9CCE410-1FE5-4A5C-8435-0F3FF6C7BC12

2023 LPS Competition Categories

March

Monochrome

Topic: Portraits

April

Nature

Topic: Straight out of Camera, No Edits

May

Travel

Topic: Architecture

June

Monochrome

Topic: Faces

July

Nature

Monthly Topic: Gardens/Flowers

August

Travel

Topic: Macro

September

Monochrome

Topic: Historical

October

Nature—Wildlife

Topic: Night Sky

PSA Interclub Competitions

LPS is a member club of the Photographic Society of America and participates in three divisions of interclub competition: Nature, Print, and Travel. There are three rounds of competition per season, with deadlines on November 15, February 15, and April 15.

LPS members who are interested in having their photos considered for our club's submissions to a PSA interclub competition can contact the LPS rep for more details. Photos are now being collected by the reps for the 2022-2023 season.

NATURE DIVISION:

Ardeth Carlson, LPS Rep
ardeth.carlson@gmail.com

Nature Division (ND) image guidelines can be found at <https://psa-photo.org/page/nature>. Ardeth is looking for images that illustrate an interesting behavior or a unique point of view, not just a landscape or wildlife that is in good focus! Storytelling is an important part of the image.

PICTORIAL PRINT:

Lisa Schnelzer, LPS Rep
lisaschnelzer@gmail.com

Description of the five image categories in the Pictorial Print Division (PPD) can be found on the PSA website: <https://psa-photo.org/page/pictorial-print>. For further information regarding the size of prints, etc., contact Lisa.

TRAVEL DIVISION:

Rich Krebs, LPS Rep
rkrebs318@gmail.com

A definition of a travel photo and a PDF of the Travel Division (PTD) guidelines can be found at <https://psa-photo.org/page/photo-travel>. Rich wants images that show characteristic features of a place or a people.

Competition Calls for Entry

2023 Regional Photography Show (B&W Only)

The Lincoln Gallery in downtown Loveland is inviting photographers from 13 regional states to enter the juried 2023 Regional Photography Show. The deadline for submissions is February 22, with an entry fee of \$45 for 2 images and an additional \$10 per image up to a maximum of 9 total entries. Cash awards will be given for Best of Show, 2nd and 3rd place, and Award of Merit.

Accepted entries will be on exhibit in the Lincoln Gallery from April 14 through May 4; showings in the virtual gallery will be extended to August 1. All works must be available for sale; the gallery will retain a 35% commission.

The only category is Monochrome, meaning either grayscale or a single color tone across the entire image.

See detailed information at:
https://artist.callforentry.org/festivals_unique_info.php?ID=11129

2023 Casa Bonita Art Show

Do you have photos of the famous/infamous Casa Bonita? The NEXT gallery is hosting the 6th Annual Casa Bonita Art Show. The gallery is looking for art that tells the tale of Casa Bonita, the fables, the facts, the fictions, the legends. All art must directly relate to the Casa Bonita restaurant. Cash prizes will be awarded. Entry deadline is February 26, with an entry fee of \$25 for up to three images.

For details:
https://artist.callforentry.org/festivals_unique_info.php?ID=11257

SERVICE

LPS Leadership Info

Per the LPS bylaws, the term of office for leadership positions of the club is one year, with election of new officers to be held in November.

Officers who have expressed intention of ending their term at the end of 2023 include treasurer/membership chair Tim Hitchcock and competition chair Jeff Stephenson.

The board would also like to fill several volunteer (non-elected) positions, including a publicity chair for a tech-savvy and social-media-conversant member who has some ideas on how to promote the club and a new field trip chair who can arrange photo shoot field trips for LPS members.

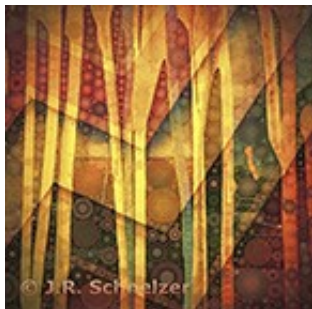
Additional members are needed to participate in judging the monthly competitions. Three judges are needed each month, and currently each judge is generally asked to judge 3-4 times per year, but the more judges that are available, the less frequently each judge would be asked to serve. Training is available to members who are interested in joining the judging queue.

In late summer, the president will also be appointing a nominating committee to provide a slate of candidates for 2024 and would like to hear from members to volunteer to serve on that committee.

If you are willing to step into any one of the above positions, please contact a member of the leadership team listed on page 1 of the newsletter.

LPS January Awards

All competition photos, along with the scores, can be viewed on the LPS website under Competition Results. Check the box "Display All."



BOS Topic, Group 5
J.R. Schnelzer



BOS Open, Group 5
Lisa Schnelzer



BOS Open, Group 4
Robert Huffsmith



BOS Open, Group 3
Mike Teska



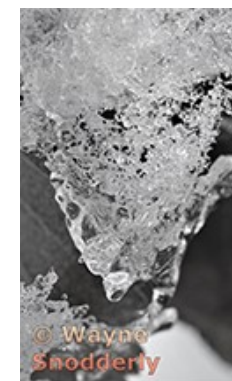
BOS Topic, Group 4
Ed Ogle



BOS Nature, Group 5
Mike Wilcox



BOS Nature, Group 4
Kevin Burkhart



BOS Open, Group 2
Wayne Snodderly



BOS Topic, Group 3
Bob McDonnell



BOS Topic, Group 2
Wayne Snodderly



BOS Nature, Group 3
Jerre Johnson



BOS Nature, Group 2
Wayne Snodderly

January Awards Continued



AOM Open, Group 5
Mike Wilcox



AOM Topic, Group 5
Mike Wilcox



AOM Topic, Group 4
Tim Hitchcock



AOM Open, Group 5
J.R. Schnelzer



AOM Topic, Group 4
Robert Huffsmith



AOM Topic, Group 3
Jerre Johnson



AOM Open, Group 4
Ed Ogle



AOM Nature, Group 5
Lisa Schnelzer



AOM Nature, Group 3
Gerald Baumann



AOM Open, Group 3
Gerald Baumann



AOM Nature, Group 4
Kurt Flock



AOM Nature, Group 3
Jenny Anderson

LPS Board Meetings Open to All Members

The LPS board will now be holding its meetings in person at the Perkins restaurant on West Eisenhower in Loveland. The meetings are open to all members. If you are interested in seeing how your leadership team tends to club business, you are welcome to attend.

Photo Editing Programs

Smart Photo Editor—This is a purchased product from Anthropics.com with numerous editing tools and hundreds of pages of special effects you can add to your uploaded photo. This can be installed as an external editor to Photoshop and Lightroom, in the same way as the Topaz and NIK filters.

Lunapic—It's a fun free online photo editor that includes editing tools and a plethora of filters and art effects, including sketching, painting, and animation.

Tuxpi.com—Add free interesting effects to your photo, such as kaleidoscopes, swirls, specialty borders, and re-toning.

BeFunky—The free version of this app, available for Apple and Android phones plus desktop download, provides a lot of features that allow you to download your edited images without a watermark; a subscription price of \$60 per year gives access to all of the features, or pay month-to-month and unsubscribe at any time. In addition to really cool art effects, which are very fun to play with, there are quite extensive editing tools that are intuitive and easy to use, along with popup explanations of how to use the tool for novice image editors.

LPS Membership

Although LPS welcomes guests to our monthly club meetings, there are benefits to joining as a member. If you like to see how your images fare in competition, you can submit up to 3 photos each month in our club competitions; you also have the opportunity to have an image submitted in the PSA interclub competitions. If you hate competitions (!), the club is also a great place to meet other photographers, get critiques and comments at the Third Monday Review sessions, find photo-op events and activities, and watch the recordings of meeting presentations. You might enjoy organizing and leading field trips or participating in them. You can also meet up with LPS members at the Saturday morning Bull Sessions.

Your membership dues also fund our annual Youth Showcase, which encourages photographers from our northern Colorado high schools to pursue the art of photography and provides them with an opportunity to have their images displayed with national/international exposure at the annual PSA Photo Festival.

The leadership team listed on page 1 of the newsletter is always open to hearing your ideas for ways to keep LPS vital and energized. You can also email the InFocus editor at ardeth.carlson@gmail.com.

LPS Speaker Recordings

As a reminder, LPS meeting presentations have been recorded and posted ever since the start of COVID and are available to view at any time. You can find links to the videos on the LPS website; when you **login**, go to **Membership>Resource Links>Videos**. Most of our speakers have graciously allowed us to record their presentations as long as they were made available to LPS members only. Please *do not share* these links with non-members unless they are marked as shareable in the list.

Member Submissions Request

Invitation to Submit an Article

The newsletter editor is always looking for material that would be of interest to our members for future issues of InFocus. There are many subjects in which you can share your expertise or experiences.

Where do you love to take your camera in the Colorado Front Range—or even farther afield? Share one of your go-to spots with other LPS enthusiasts!

Mirrorless cameras, tilt-shift lenses, fisheyes, ultra-fast shutter controls, portable lighting setups, camera straps—options for tools to add to your camera bag seem limitless. For those of us who have pondered what innovative equipment would help enhance our photography life, your first-hand experience would be helpful.

What techniques for shooting or post-processing do you love to use? What is your post-processing workflow?

If you aren't confident in your writing ability, the editor will help polish your article for publication. Contributions by LPS members will help this newsletter be relevant and of value to our readers.

JOIN THE CLUB

If you are reading this newsletter as a non-member and would like to join the Loveland Photographic Society, go to the main page on the www.lps.cc website and click on **Membership > Join or Renew**. Annual dues are \$45.